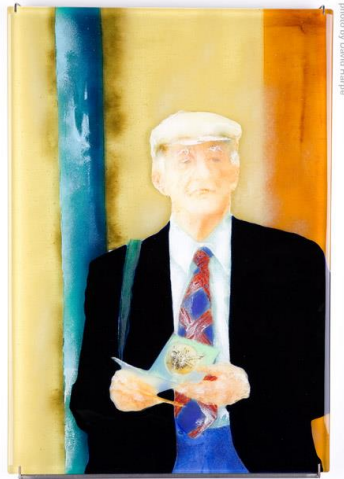




CATHARINE NEWELL



Education

- 2010** Residency / Pilchuck Glass School / Stanwood, WA
- 2004** Participant / Janusz Walentynowicz class / Pilchuck Glass School / Stanwood, WA
- 2003** Participant / Kirstie Rea: "Landscape and Place" / North Lands Creative Glass / Lybster, Scotland
- 2000** Participant / Narcissus Quagliata: "Painting with Light" / Pilchuck Glass School / Stanwood, WA
- 1965-69** BA, Fine Arts / University of California / Santa Barbara, CA

Awards & Honors

- 2004** Scholarship recipient / Pilchuck Glass School / Stanwood, WA
- 2003** CraftHouston Award of Merit
Louis Comfort Tiffany Biennial Award Nominee
- 2002** First Place / WG@BE II, Bullseye Resource Center / Portland, OR
NICHE Award / Buyers Market of American Craft / Philadelphia
- 2000** Corning Award Nominee / Pilchuck Glass School / Stanwood, WA

Publications

- 2012** New Glass Review 33, May 2012 / Corning Museum
- 2010** New Glass Review 31, May 2010 / Corning Museum
- 2009** New Glass Review 30, May 2009 / Corning Museum
- 2008** "Ones to Watch" / Western Art & Architecture, pp 50-51, Fall 2008
- 2007** Oregon Public Broadcasting: "Art Beat," televised profile, March 2007
- 2006** Pittsburgh Tribune-Review, Living, May 2006
"The Art of Craft" / The Daily Vanguard, November 2006 / Portland State University
Portland Monthly / October 2006
- 2005** New Glass Review 26, May 2005 / Corning Museum
Particle Theories: International Pâte de Verre & Other Cast Glass Granulations / Museum of
American Glass catalog, by Susanne K. Frantz